

LUXURY VINYL FLOORING



HW
HanWood

THE
Paragon
COLLECTION



1220 x 229 x 4.5mm

LUXURY VINYL FLOORING

Paragon

A stunning balance between sophistication and bold new styles blending seamlessly to provide a chic and stylish palette.

Available in a myriad of hues and featuring ultra-realistic embossed finishes, Paragon luxury vinyl planks are not only aesthetically pleasing but able to withstand intense traffic with its 0.55mm wear layer and 4.5mm thickness.

The perfect solution for both residential and commercial projects requiring a hard wearing floorcovering that also portrays the stunning beauty of real wood.



Le Sable Code: HW40



Blanc Code: HW41



Rustique Code: HW42



Cacao Code: HW43



Miel Code: HW44



Cendre Code: HW45



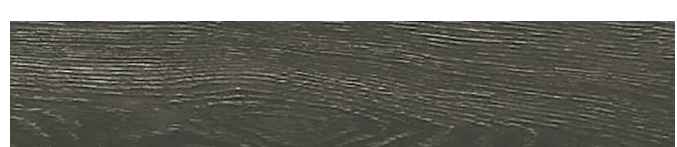
Perle Code: HW46



Jaune Code: HW47



Rouge Code: HW48

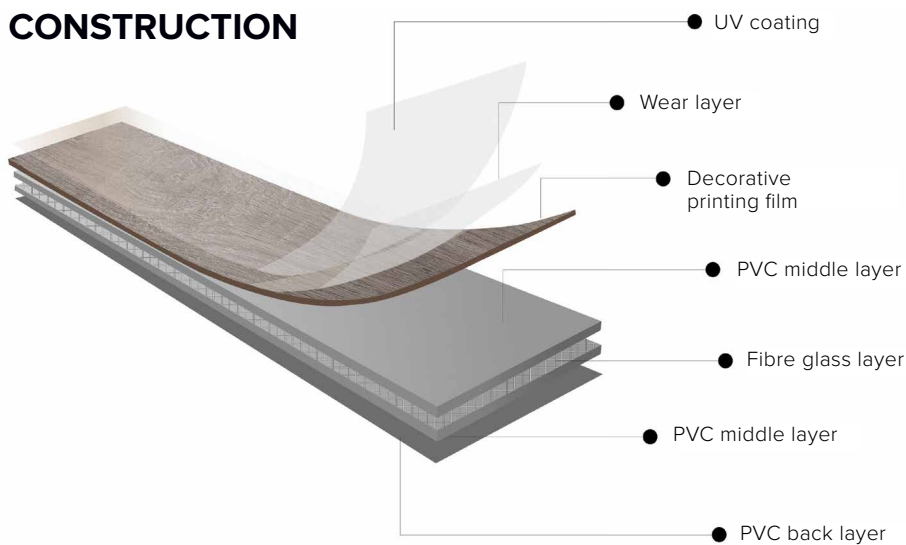


Noir Code: HW49

TECHNICAL SPECIFICATIONS

STANDARD REFERENCE		
Size	EN ISO 24342	1220 x 229 x 4.5mm/0.55mm
Overall thickness	EN ISO 24346	4.5mm
Wear layer thickness	EN ISO 24340	0.55mm
Dimensional stability after exposure to heat	EN ISO 23999	≤0.25%
Usage Classification	EN ISO 10874	23,33,42
Slip Resistance	AS4586:2013	P3
Colour fastness to artificial light	EN ISO 105 B02	≥6
Thermal resistance	EN 12667	0.034m ² K/W
Flexibility	EN ISO 24344	20mm
Resistance to staining	EN ISO 26987	Excellent
Heavy metals	Rohs	Not detected
Phthalate	EN 14372	Not detected
Fire Classification	AS/ISO 9239.1-2003	CHF: 6.7 kW/m ² Smoke value: 111 %.min
SVHC	REACH	Pass
VOC	DIBT/AgBB	Pass
	French VOC Regulation	A+
	California Specification 01350	Pass
Warranty	Commercial	10 years
	Residential	20 years
No. of pieces	9 pcs/box	
Box Volume	2.51m ²	

CONSTRUCTION



PHTHALATE FREE



NO HEAVY METALS



CERTIFIED BY
SCS Global Services



SOFT
& WARM



QUIET
UNDERFOOT



STAIN
RESISTANT



NATURAL
LOOK & FEEL



HIGHLY
DURABLE



WATER
RESISTANT

For enquiries please contact QEP PTY LTD
P: 1300 737 155 | E: salesaust@qep.com



noun | par - a - gon
: a model of excellence
or perfection



HW
HanWood

THE URBAN
COLLECTIVE

LUXURY VINYL FLOORING

PLANKS

1220 x 185 x 2.5mm

Welcome to a world of earthy wood motifs, moody shades and modern super-mat finishes. *An urban oasis awaits.*



The Urban Collective plank range offers an array of tones and variations to create limitless design opportunities for modern urban interior spaces. Think concrete, exposed timber beams, steel, and rustic surfaces.

The Urban style lends itself to open plan living where spaces are multi-functional and spacious. City dwellings, trendy retail fitouts, converted warehouses and offices are the ideal spaces to embrace the urban look.



Foveaux Street

Code: HW21



Collins Street

Code: HW22



Sussex Street

Code: HW23



Belvoir Street

Code: HW24



Brunswick Street

Code: HW25



Chapel Street

Code: HW26



Argyle Street

Code: HW27



Fitzroy Street

Code: HW28



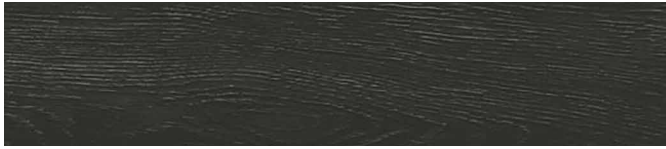
Gresham Lane

Code: HW50



Winn Lane

Code: HW06A



Burnett Lane

Code: HW10A



Eagle Lane

Code: HW11A



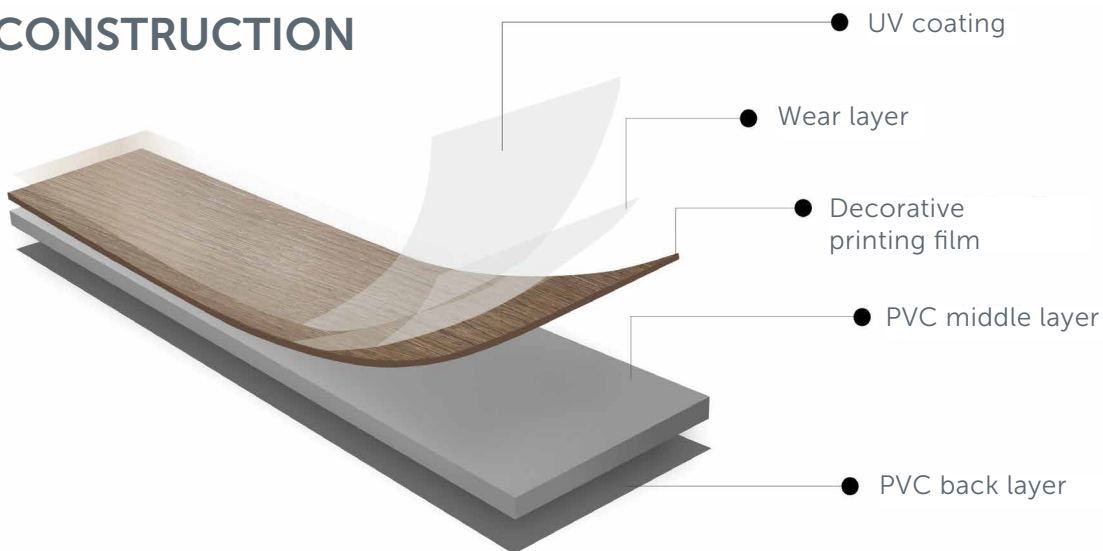
James Street*

Code: HW09A

*Strong shade variations



CONSTRUCTION



PHTHALATE FREE



NO HEAVY METALS



CERTIFIED BY SCS Global Services



TILES

Conquer the look of concrete and embrace industrial minimalism without the hassle.

610 x 610 x 2.5mm

Minimalism is all about stripping back to basics to achieve a cool, calm, clutter free space. Subdued hues rule here, from charcoal to greige and every ecru-inspired tone in between.

The Urban Collective luxury vinyl tiles simultaneously showcases exceptional functional design while artistically portraying the detailed intricacies of stone and concrete.



Hosier Lane
Code: HW29



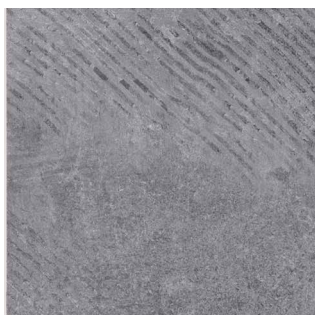
York Lane
Code: HW30



Abercrombie Lane
Code: HW31



Mill Lane
Code: HW32



Hardware Lane
Code: HW33



Flinders Lane
Code: HW34



St Jeromes Lane
Code: HW35

TECHNICAL SPECIFICATIONS

Standard Reference

Size	EN ISO 24342	1220 x 185 x 2.5mm/ 0.55mm (planks) 610 x 610 x 2.5mm /0.55mm (tiles)
Overall thickness	EN ISO 24346	2.5mm
Wear layer thickness	EN ISO 24340	0.55mm
Dimensional stability after exposure to heat	EN ISO 23999	≤0.25%
Usage Classification	EN ISO 10874	23,33,42
Slip Resistance	AS4586:2013	P3
Colour fastness to artificial light	EN ISO 105 B02	≥6
Thermal resistance	EN 12667	0.034m ² K/W
Flexibility	EN ISO 24344	20mm
Resistance to staining	EN ISO 26987	Excellent
Heavy metals	Rohs	Not detected
Phthalate	EN 14372	Not detected
Fire Classification	AS/ISO 9239.1-2003	CHF: 6.4 kW/m ² Smoke Value: 76%
SVHC	REACH	Pass
VOC	DIBT/AgBB	Pass
	French VOC Regulation	A+
	California Specification 01350	Pass
Warranty	Commerical	10 years
	Residential	20 years
No. of pieces	Planks: 15 pcs/box	Tiles: 12pcs/box
Box volume	Planks: 3.37m ²	Tiles: 4.46m ²



SOFT & WARM



STAIN RESISTANT



NATURAL LOOK & FEEL

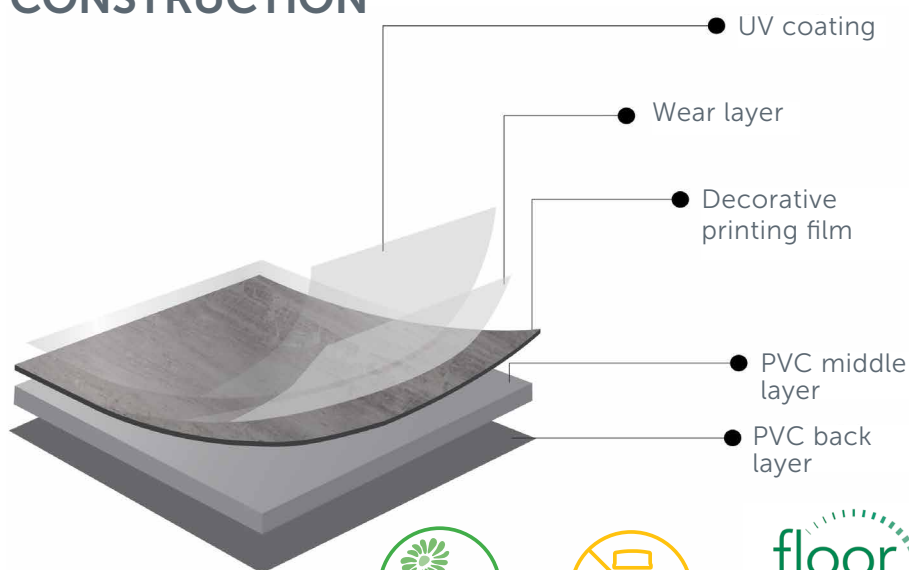


HIGHLY DURABLE



WATER RESISTANT

CONSTRUCTION



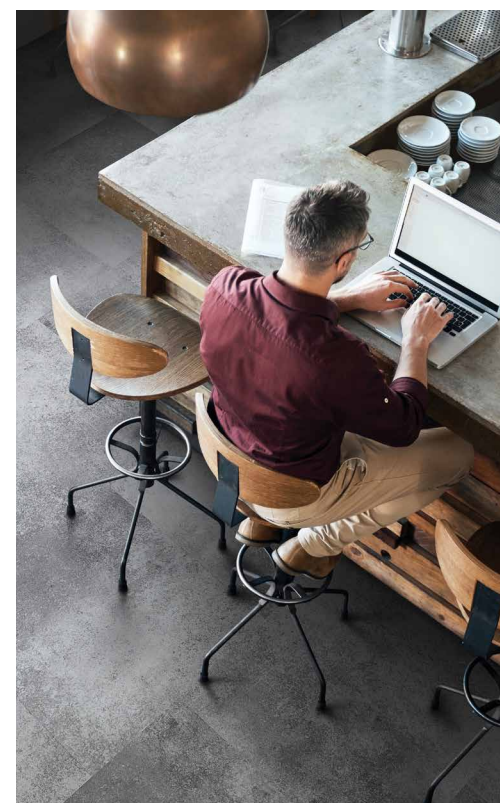
PHTHALATE FREE



NO HEAVY METALS



CERTIFIED BY SCS Global Services



For enquiries please contact QEP PTY LTD
P: 1300 737 155 | E: salesaust@qep.com