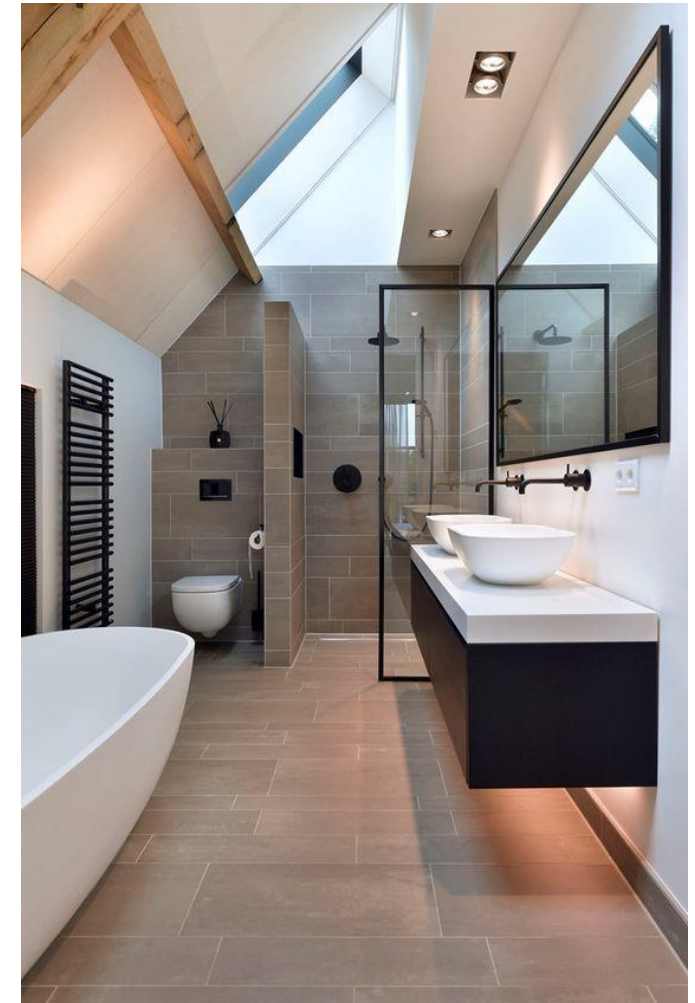


Popular Interior Design Styles

General information to assist in the selection process.

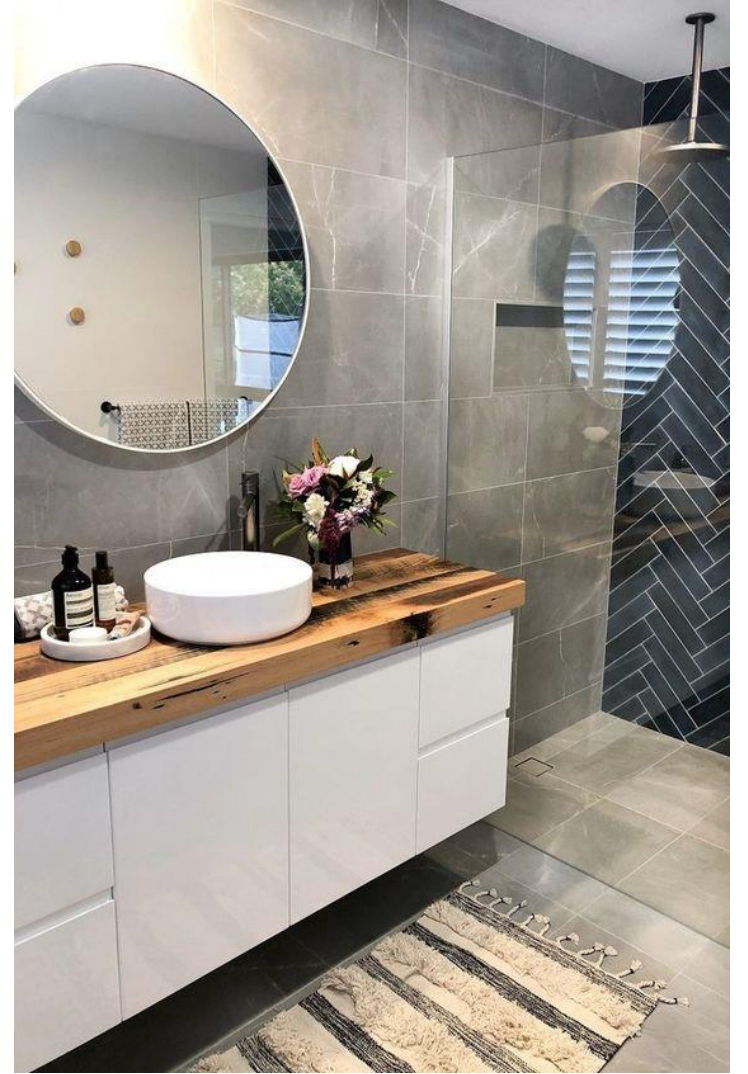
Modern – Clean, crisp/hard lines, metal, glass & simple colour pallet



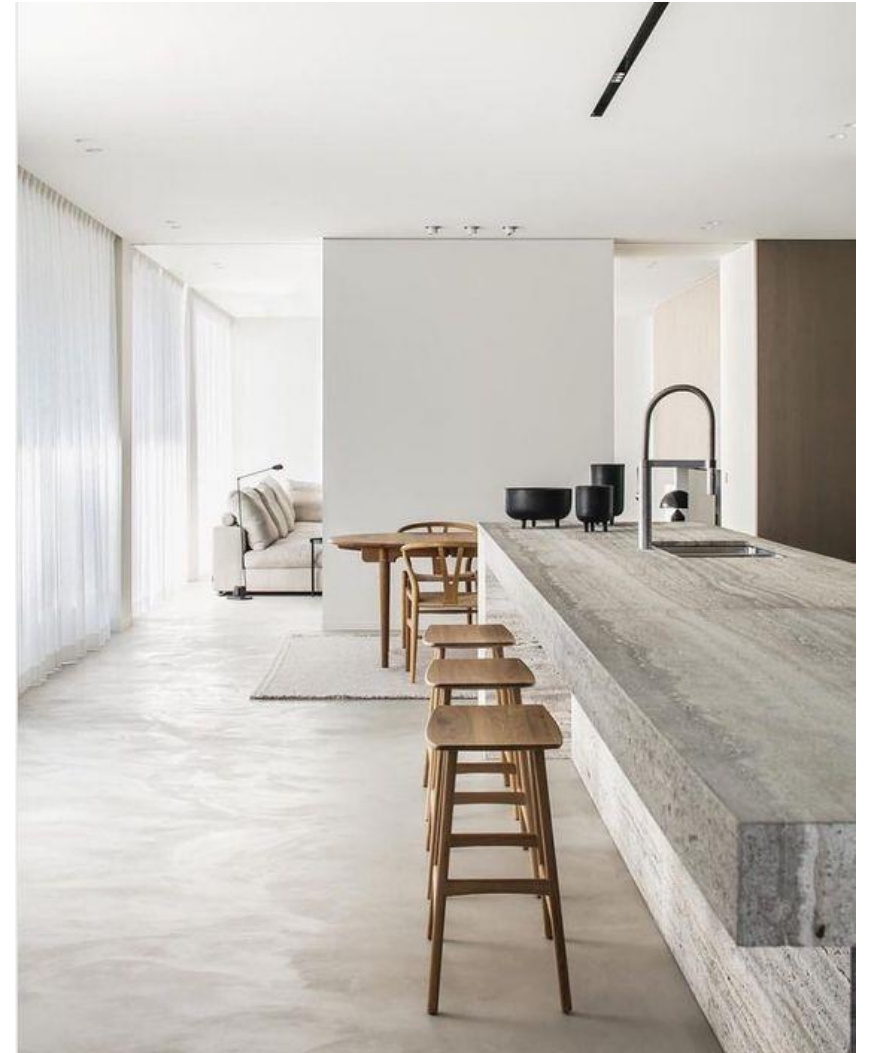


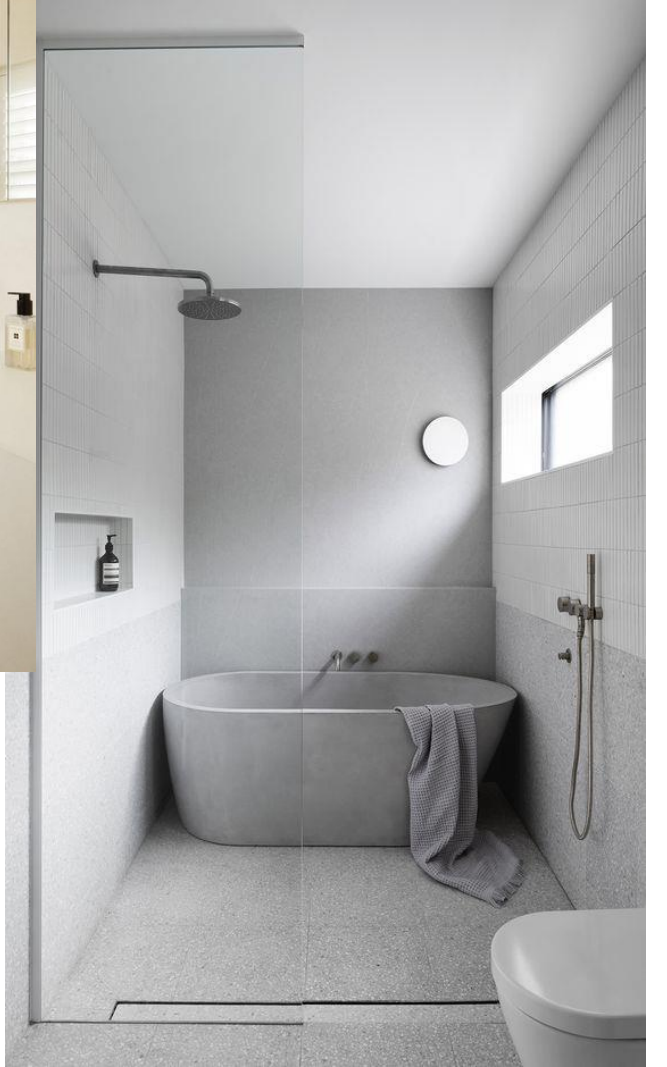
Contemporary – Similar to modern, but less strict



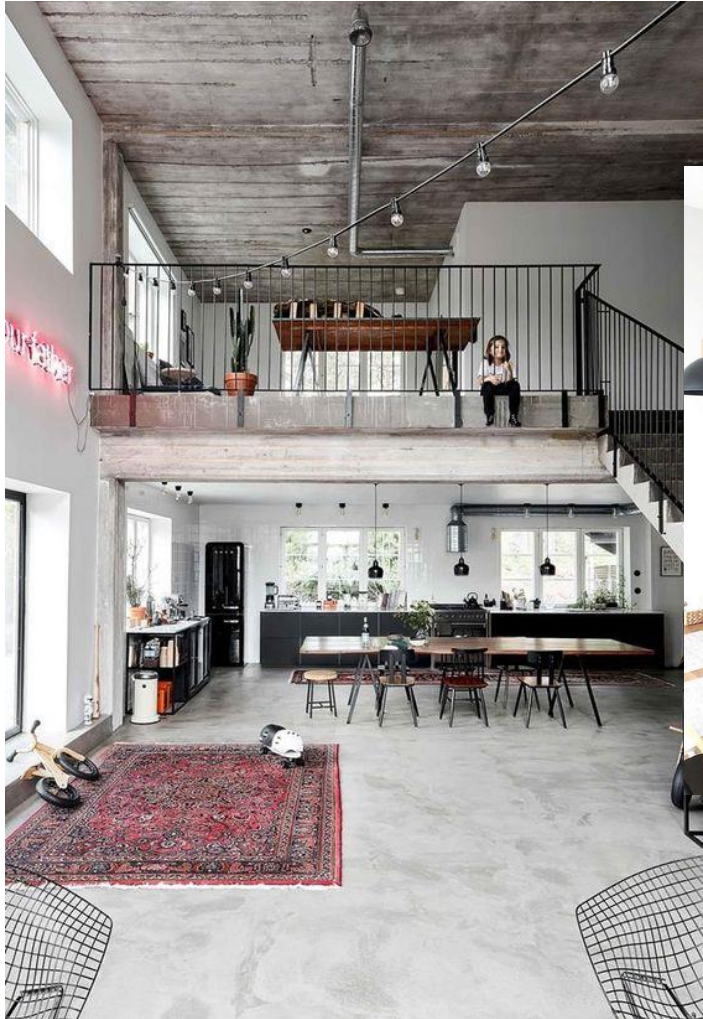


Minimalist – neutral colours, minimal furniture and decorations (*opposite of traditional*)





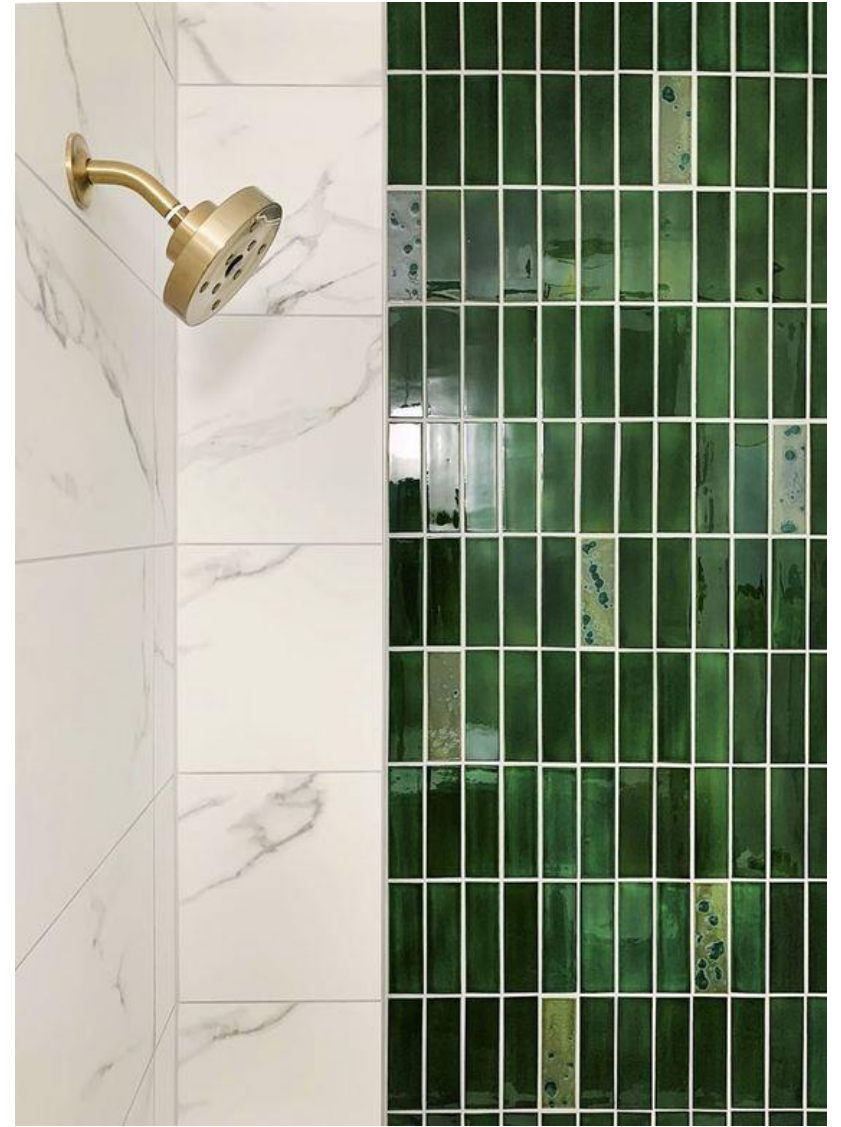
Industrial – raw, unfinished, metal, wood, concrete



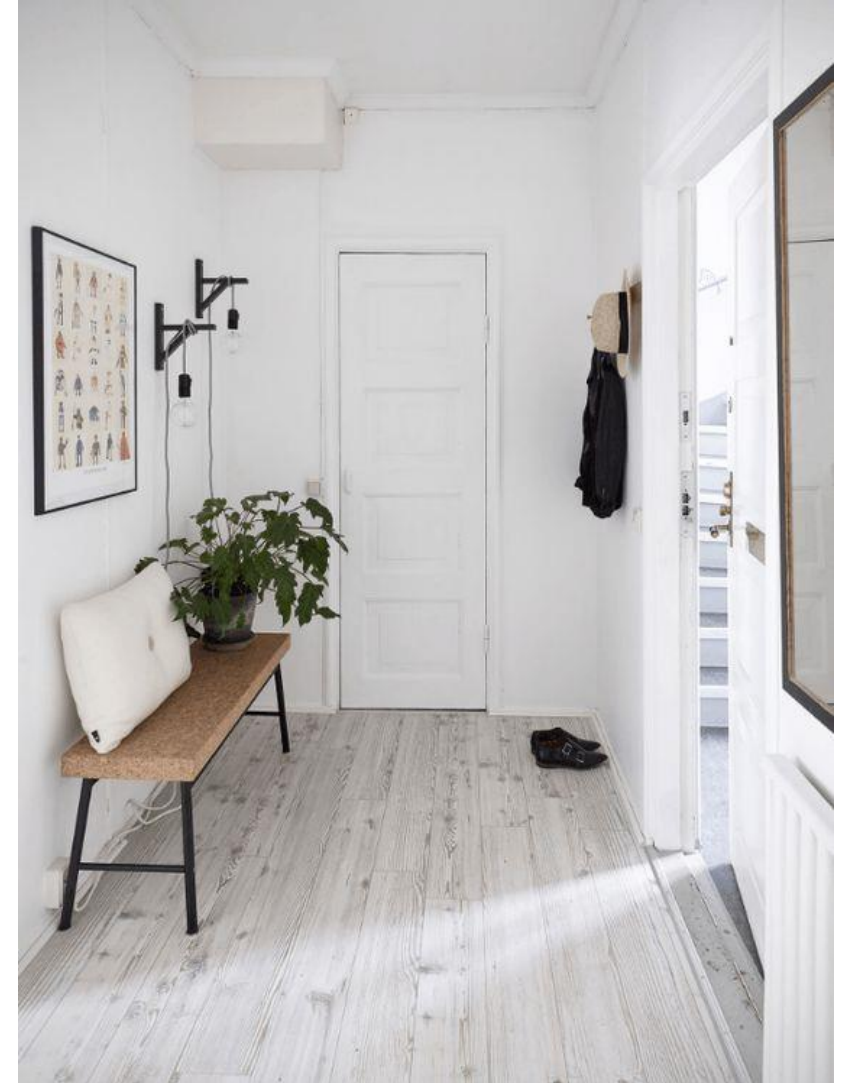


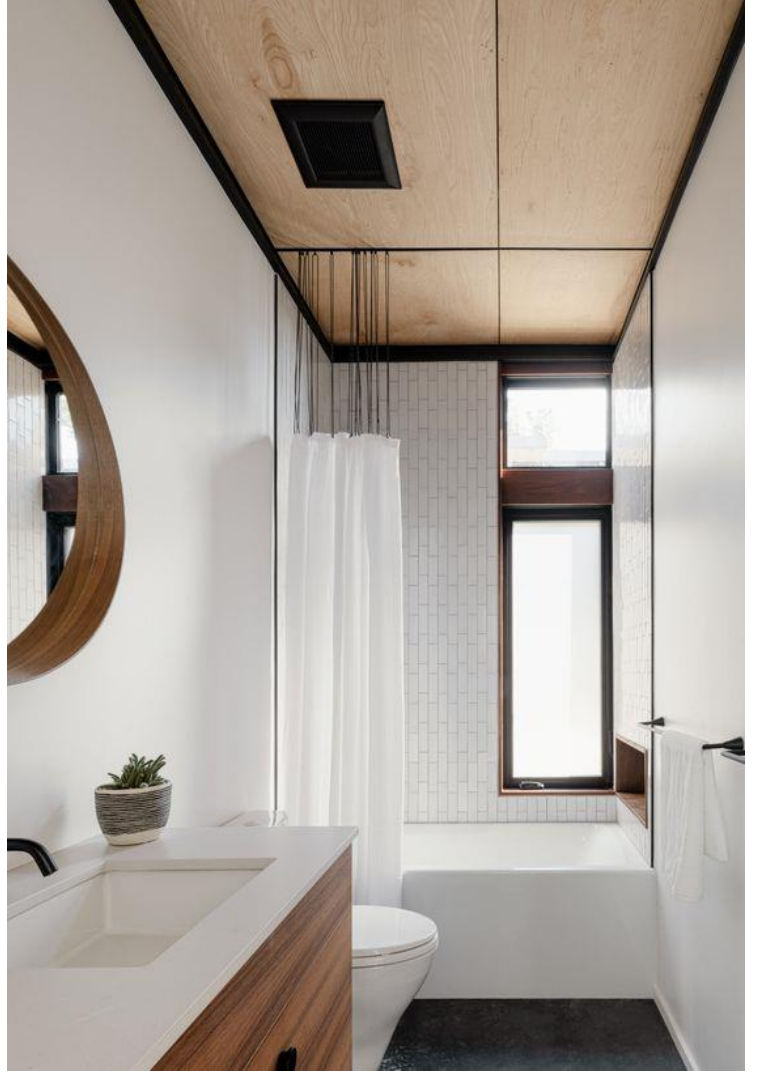
Mid-Century Modern – retro mixed with modern





Scandinavian (*Scandi*) – pale white tones, white-washed timbers





Traditional - rich colours, marble, detailing, dark finished wood, lots of texture & accessories (*opposite of minimalist*)





French Country – warm earthy colours, ornamental wood, stone





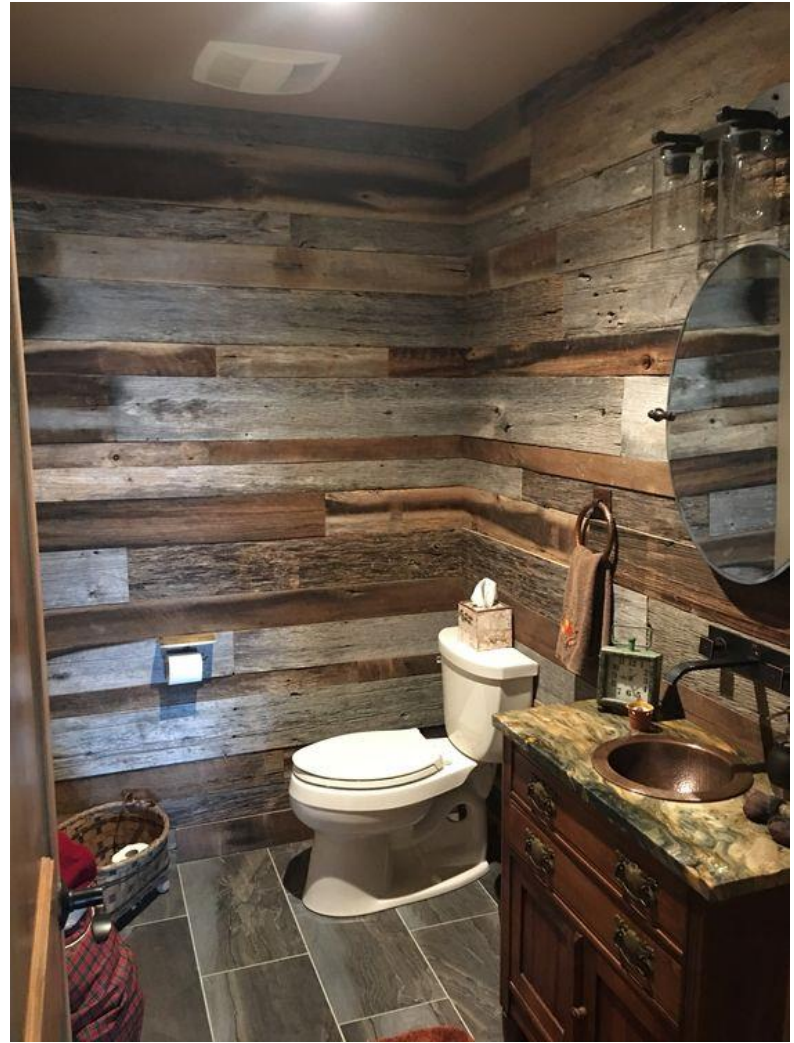
Bohemian (*Boho*) – Carefree, globally influenced patterns, upcycled materials/furniture



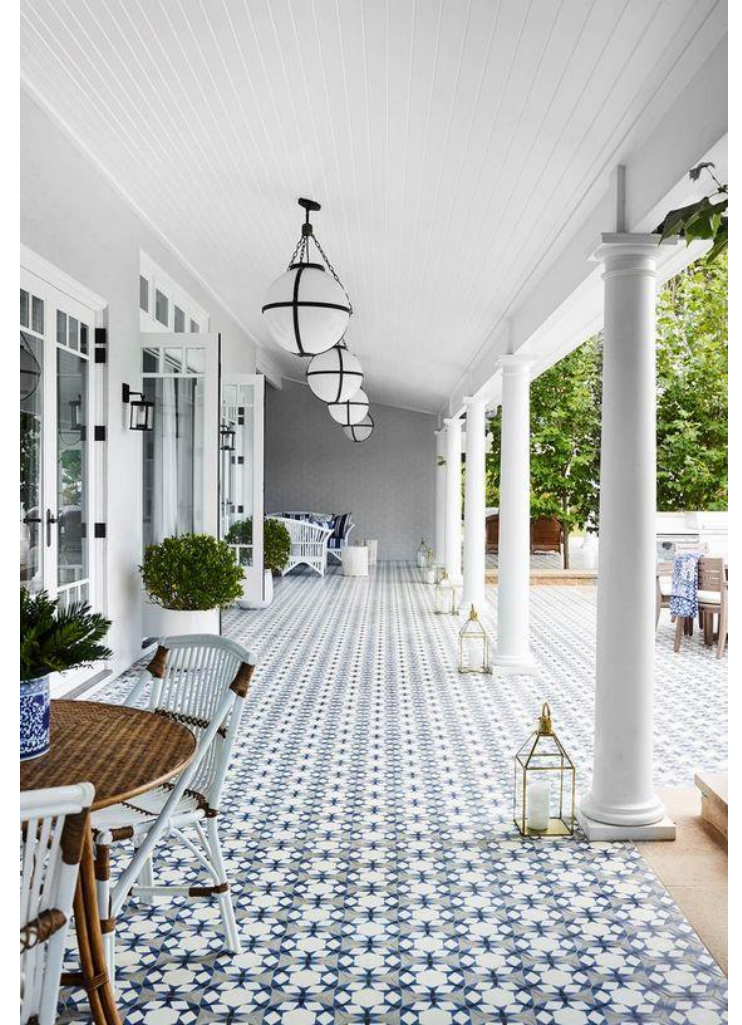


Rustic – nature is a big inspiration. Raw, unfinished wood & stone





Hamptons (coastal) – light airy colour pallet with pops of blue and/or green





Farmhouse – toned down version of rustic. A lot of wood, with white walls and pops of blue.





All images have been taken from [pinterest.com.au](https://www.pinterest.com.au)